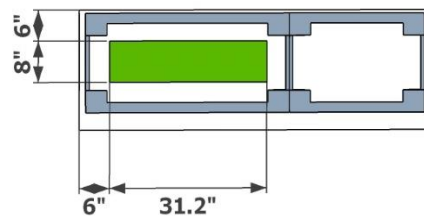
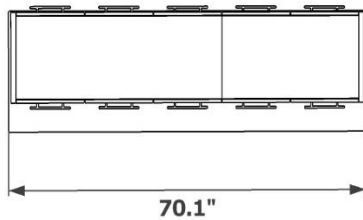
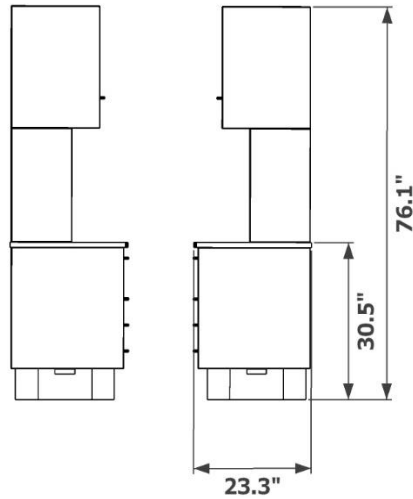
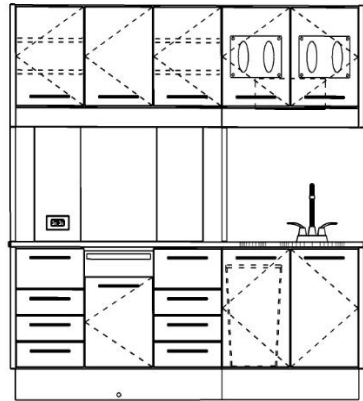




**Symmetry Dental Equipment**  
**Symmetry 4.0 Collection**  
**4J - Rear Treatment Console (Wall Mounted Only)**  
**Specification Page**



- Structural steel powder coated base with levelers
- Decorative brushed nickel bar pulls
- Soft-close steel drawers
- Soft-close concealed hinge doors
- Vertical chase to allow CPU in upper middle cabinet
- Solid surface counter top
- Premium embossed laminate fronts and accent panels options
- Two hospital grade outlets
- Task lighting
- Undermount stainless steel sink with strainer
- Soap pump
- Through top waste opening (waste receptacle not included)
- Quad glove dispensing
- Under console towel dispensing

Décor Finish	
Counter Finish	

**Grey indicates location of the structural steel base**

**Green indicates available location for floor based utilities**